



Oil & Mining Industries - Government Agencies



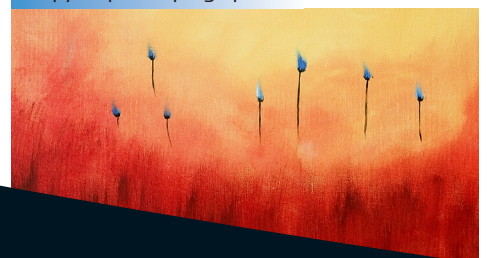
Architects - Engineers - Contractors



Clipping Services



Copyshops - Reprographics

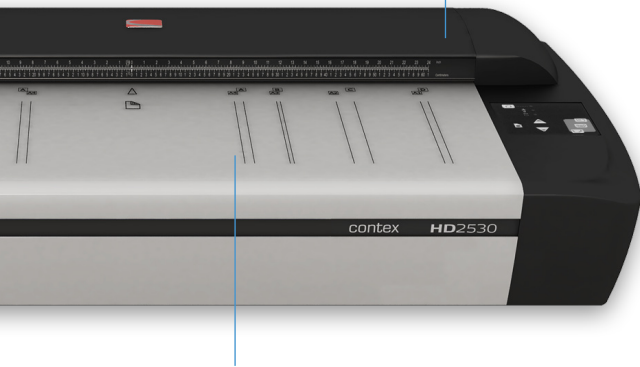


## Contex **HD2530**

Expand your business opportunities with Contex's HD2530 all-round color and monochrome HD2530 wide format scanner featuring advanced technology and quality imaging. Small enough to fit on your desk, yet big enough to handle your toughest archiving tasks - the Contex HD2530 delivers HD quality in an attractively small package. The 25" imaging area is designed to facilitate archival and reprographic tasks with a wide variety of technical documents, detailed maps and drawings, or color posters and architectural sketches - all with unparalleled detail and accuracy. Contex HD2530 handles up to A1 or D-sized originals and documents with ease. With uncompromising image quality standards, the Contex HD2530 is designed to provide dependable, top-quality results for businesses-critical imaging tasks. Whether you are a private business, government agency or high-volume copy shop, Contex's full range of HD scanners is the right solution for improved efficiency and productivity.

See more at [www.contex.com](http://www.contex.com)

AWD for a perfect and even grip on any kind of original - even thick documents!



The 25-inch scanning area is ideal for scanning up to A1 or D-size documents or well logs.

## Features

- 25-inch design can handle up to A1 or D-size originals
- 48-bit color and 16-bit grayscale image data capture from high quality CCD technology
- Two efficient plug'n'play interface options - FireWire and USB 2.0
- On-board Image Processing: Built-in Sharpen, Blur, Descreen, Error Diffusion, Adaptive Thresholding
- Scan-to-Net function for scanner sharing over a network, and sending files to remote PCs
- Color calibration to sRGB color space
- Upgrade to PLUS model for more speed and higher resolution.

### Small Size, Big Quality

The smallest of the HD series provides the same high level of quality as the larger HD products. The combination of a highly sensitive high-quality CCD camera with a full-sized professional-grade camera lens, gives the HD2530 the power to capture higher levels of detail than the competition.

### Archiving When You Need

Whatever your archival needs are, Contex has the right solution for your business. The HD2530 scanner is the ideal solution for oil/mining industries, clipping services, and is perfect for copy shop/imaging services world wide. Thanks to 48-bit color and CCD imaging quality, the HD2530 is also perfect for desktop publishing and graphics work.

SPECIFICATIONS	Contex <b>HD2530</b>	
	BASE	PLUS
Optical Resolution	424dpi	424dpi
Maximum Resolution	1200dpi	9600dpi
Maximum Scan Width	25in. (635mm)	25in. (635mm)
Maximum Media Width	28in. (711mm)	28in. (711mm)
Maximum Media Thickness	0.6in. (15mm)	0.6in. (15mm)
Accuracy	0.1% +/- 1 pixel	0.1% +/- 1 pixel
<b>SCANNING SPEED (inch/sec.) :</b>		
400dpi (Turbo) 24-bit RGB Color	0.5	1.5
400dpi (Turbo) 8-bit Index Color	1.5	1.5
400dpi (Turbo) 8-bit Grayscale	4.0	4.0
400dpi (Turbo) 1-bit Monochrome	4.0	4.0
<b>INTERFACE :</b>		
High Speed USB 2.0		✓
FireWire (IEEE1394)		✓
Power	110/220/240V, 60/50 cs, 180W	
Weight / Dimensions (LxWxH)	43 kg (39" x 19" x 7" inches) (98 x 47 x 18 cm)	
Device Drivers	Windows XP, Server 2003, Vista (32-bit only)	

See our entire product range and download further details at [www.contex.com](http://www.contex.com)

#### Contex HQ Europe

Contex A/S  
 Svanevang 2  
 DK-3450 Allerød · Denmark  
 T: +45 4814 1122  
 F: +45 4814 0122

#### Contex USA

14100 Parke-Long Court, Suite P  
 Chantilly, VA 20151 · USA  
 T: +1 (703) 378-2209  
 F: +1 (703) 378-0036  
 US Toll free: 1-877-226-6839

#### Contex Japan

Yokohama Landmark Tower 30th  
 Floor  
 2-2-1 Minato-Mirai  
 Nishi-ku, Yokohama 220-8130  
 T: +81 452243272  
 F: +81 45-224-3274

#### Contex China

Room 801, Jin Tian Di International  
 Mansion  
 998 Renmin Road, 200021  
 Shanghai, China  
 T: +86 21 63110808  
 F: +86 21 6336 3060